

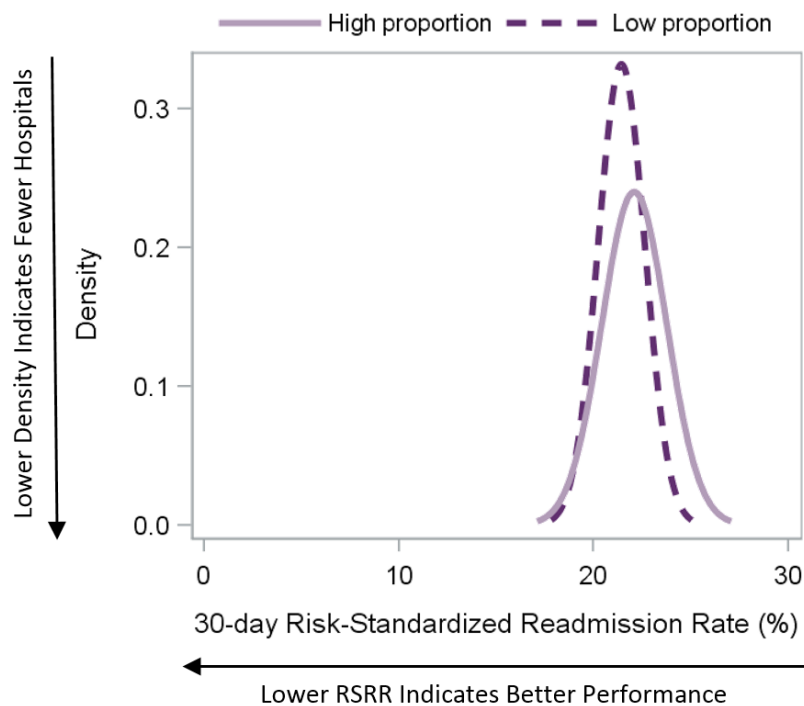
► **Performance on the heart failure readmission measure:** Hospitals that serve high and low proportions of Medicaid patients.

The Centers for Medicare & Medicaid Services (CMS) evaluates hospital performance in relation to the proportion of Medicaid patients served in order to monitor patterns, changes, and potential unintended consequences in the measure results. This information allows CMS to better understand the current state of care within U.S. hospitals.

The heart failure readmission measure includes Medicare fee-for-service (FFS) beneficiaries aged 65 or older and assesses the occurrence of unplanned readmission for any cause within 30 days after discharge from a hospitalization for heart failure [1].

CMS began publicly reporting 30-day risk-standardized readmission rates (RSRRs) following hospitalizations for heart failure in 2009 [2]. Publicly reported measure results are updated annually on the [Hospital Compare](#) website. The heart failure readmission measure has been included in the Hospital Readmissions Reduction Program (HRRP) since 2012 [3].

FIGURE I. Distributions of heart failure RSRRs (%) for hospitals with low and high proportions of Medicaid admissions, July 2013-June 2016.



Variation in RSRRs reflects differences in performance among hospitals; lower RSRRs suggest better quality and higher RSRRs suggest worse quality. To understand how caring for Medicaid patients might impact a hospital's RSRR, we examined RSRRs among hospitals with high and low proportions of Medicaid patients. We compared the heart failure RSRRs for the 367 hospitals with $\leq 7.3\%$ Medicaid admissions to the 367 hospitals with $\geq 31.7\%$ Medicaid admissions for the July 2013 – June 2016 reporting period. We defined hospitals with low and high proportions of Medicaid admissions as those that fall within the lowest and highest deciles of all hospitals with 25 or more qualifying discharges (N= 3,665). The proportion of Medicaid admissions for each hospital was determined using the American Hospital Association (AHA) Annual Survey Database Fiscal Year 2015 [4]. To ensure accurate assessment of each hospital, the heart failure readmission measure uses a statistical model to adjust for key differences in patient risk factors that are clinically relevant and that have a strong relationship with the readmission outcome [1].

Prepared for CMS by Yale New Haven Health Services Corporation – Center for Outcomes Research and Evaluation (YNHHSC/CORE) September 2017

TABLE 1. Distributions of heart failure RSRRs (%) for hospitals with low and high proportions of Medicaid admissions, July 2013-June 2016.

	Heart failure RSRR (%)	
	Hospitals with low proportions ($\leq 7.3\%$) of Medicaid admissions n = 367	Hospitals with low proportions ($\geq 31.7\%$) of Medicaid admissions n = 367
Maximum	24.6	28.7
90%	22.8	24.3
75%	22.2	23.1
Median (50%)	21.5	22.0
25%	20.7	21.0
10%	20.0	20.2
Minimum	15.8	18.3

The median heart failure RSRR for hospitals with low proportions of Medicaid admissions was 21.5% (interquartile range [IQR]: 20.7%-22.2%; Figure 1 and Table 1). The median heart failure RSRR for hospitals with high proportions of Medicaid admissions was 22.0% (IQR: 21.0%- 23.1%; Figure 1 and Table 1).

Hospitals with low proportions of Medicaid admissions had a median heart failure RSRR that was 0.5 percentage points lower than hospitals with high proportions.

1. Jaymie Simoes, Jacqueline N. Grady, Jo DeBuhr, et al. 2017 Condition-Specific Measures Updates and Specifications Report Hospital-Level 30-Day Risk-Standardized Readmission Measures: Acute Myocardial Infarction – Version 10.0 Chronic Obstructive Pulmonary Disease – Version 6.0 Heart Failure – Version 10.0 Pneumonia – Version 10.0 Stroke – Version 6.0. <https://www.qualitynet.org/dcs/ContentServer?c=Page&pagename=QnetPublic%2FPage%2FQnetTier4&cid=1219069855841>. Available as of April 4, 2017.

2. Hospital Inpatient Quality Reporting (IQR) Program Overview. QualityNet website. <https://www.qualitynet.org/dcs/ContentServer?c=Page&pagename=QnetPublic%2FPage%2FQnetTier2&cid=1138115987129>. Accessed March 1, 2017.

3. Hospital Readmissions Reduction Program Overview. QualityNet website. <https://www.qualitynet.org/dcs/ContentServer?c=Page&pagename=QnetPublic%2FPage%2FQnetTier2&cid=1228772412458>. Accessed March 1, 2017.

4. AHA Annual Survey Database Fiscal Year 2014; <http://www.ahadataviewer.com/book-cd-products/AHA-Survey/>. Accessed March 2, 2017.

Prepared for CMS by Yale New Haven Health Services Corporation – Center for Outcomes Research and Evaluation (YNHHSC/CORE) September 2017